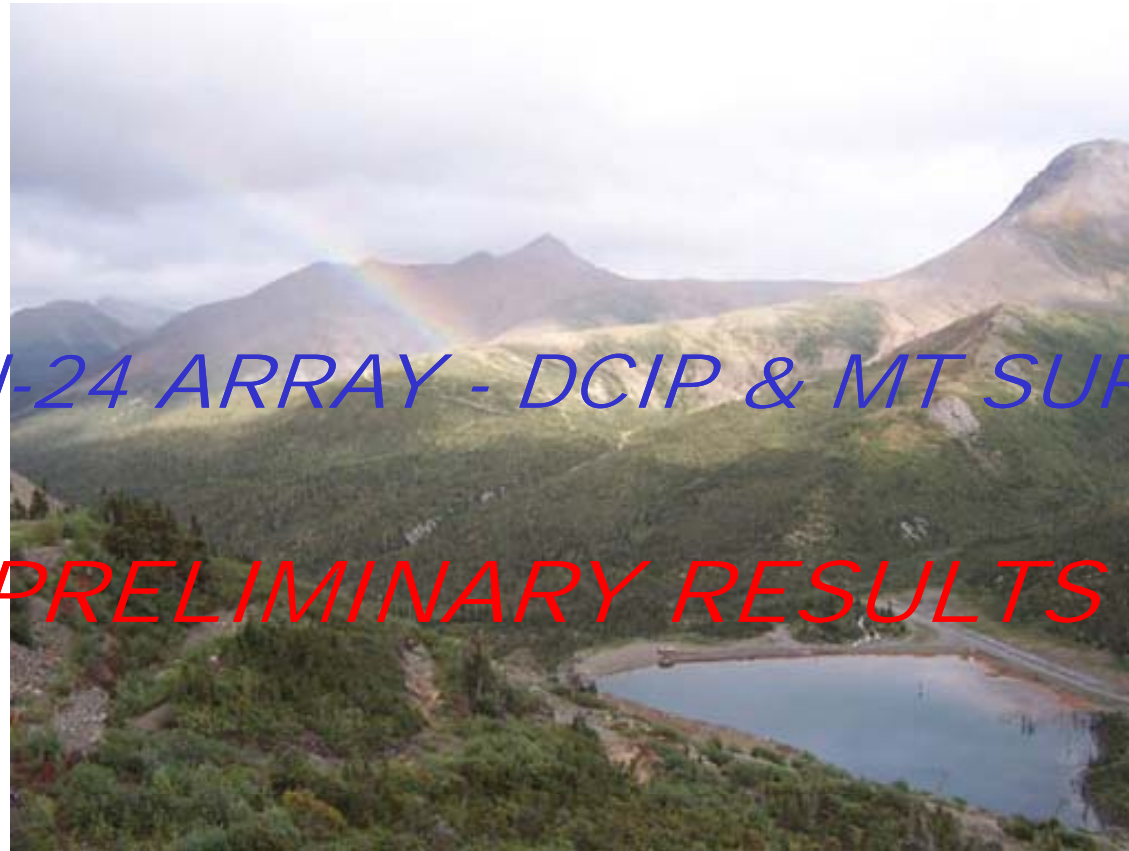


*KETZA PROJECT, KETZA RIVER HOLDINGS LTD
QUANTEC PROJECT CA00681T*



TITAN-24 ARRAY - DCIP & MT SURVEY

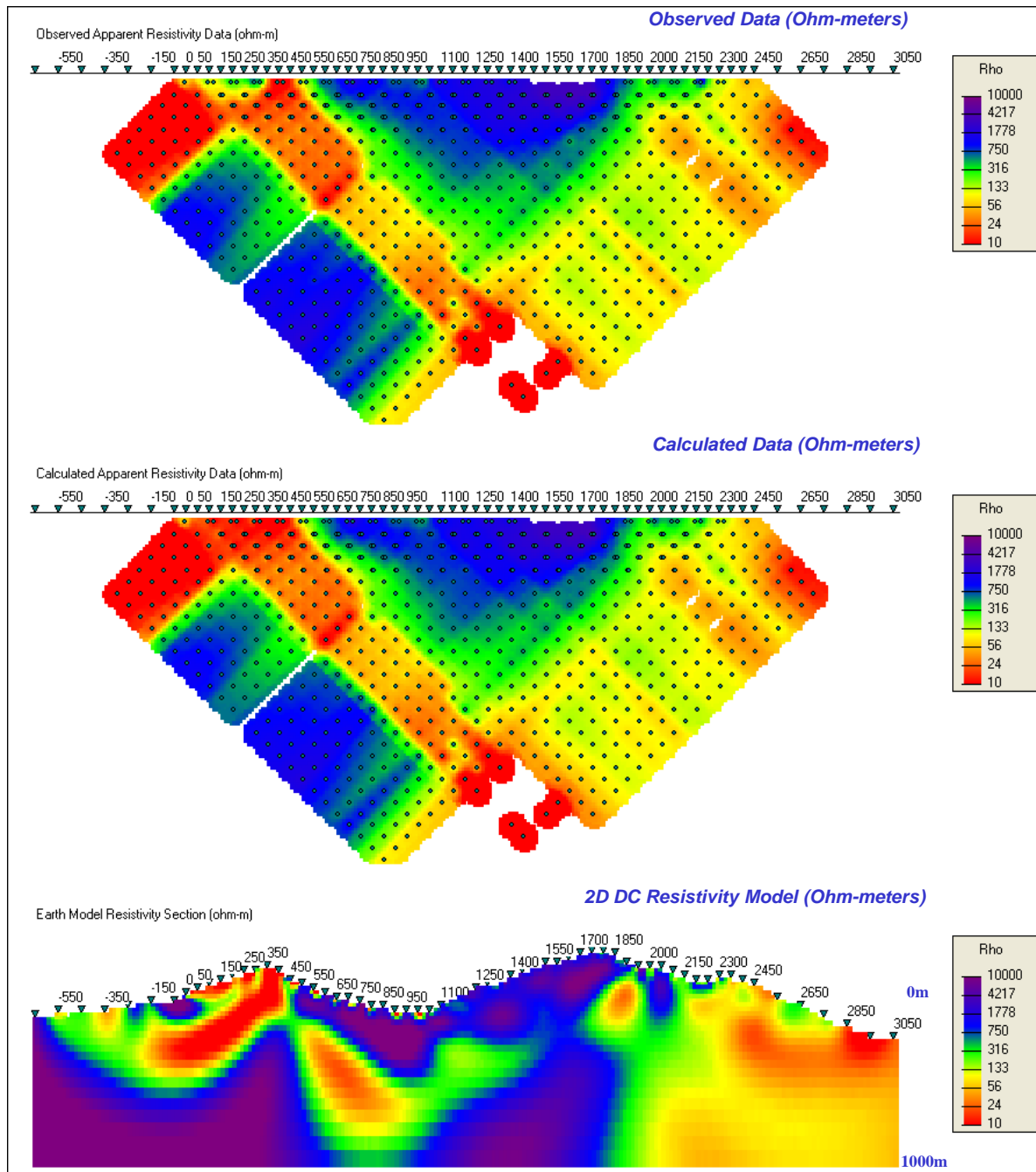
PRELIMINARY RESULTS

L600N : 2D DCIP Inversion Models



*E. Martinez, P.GEO. M.Sc.
K. Killin, H.B.Sc. Project Manager
Quantec Geoscience Ltd.
August, 2009*

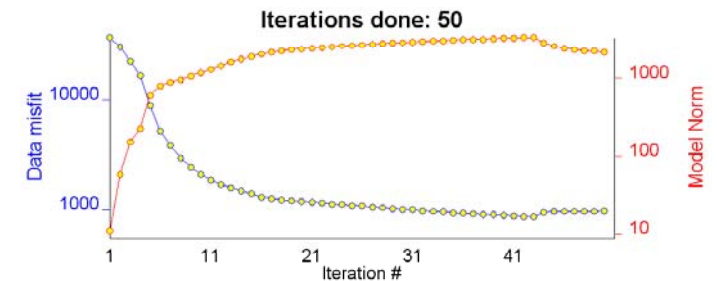
L600N- UBC 2D DC Resistivity Inversion Results (smDC)



Inversion Parameters

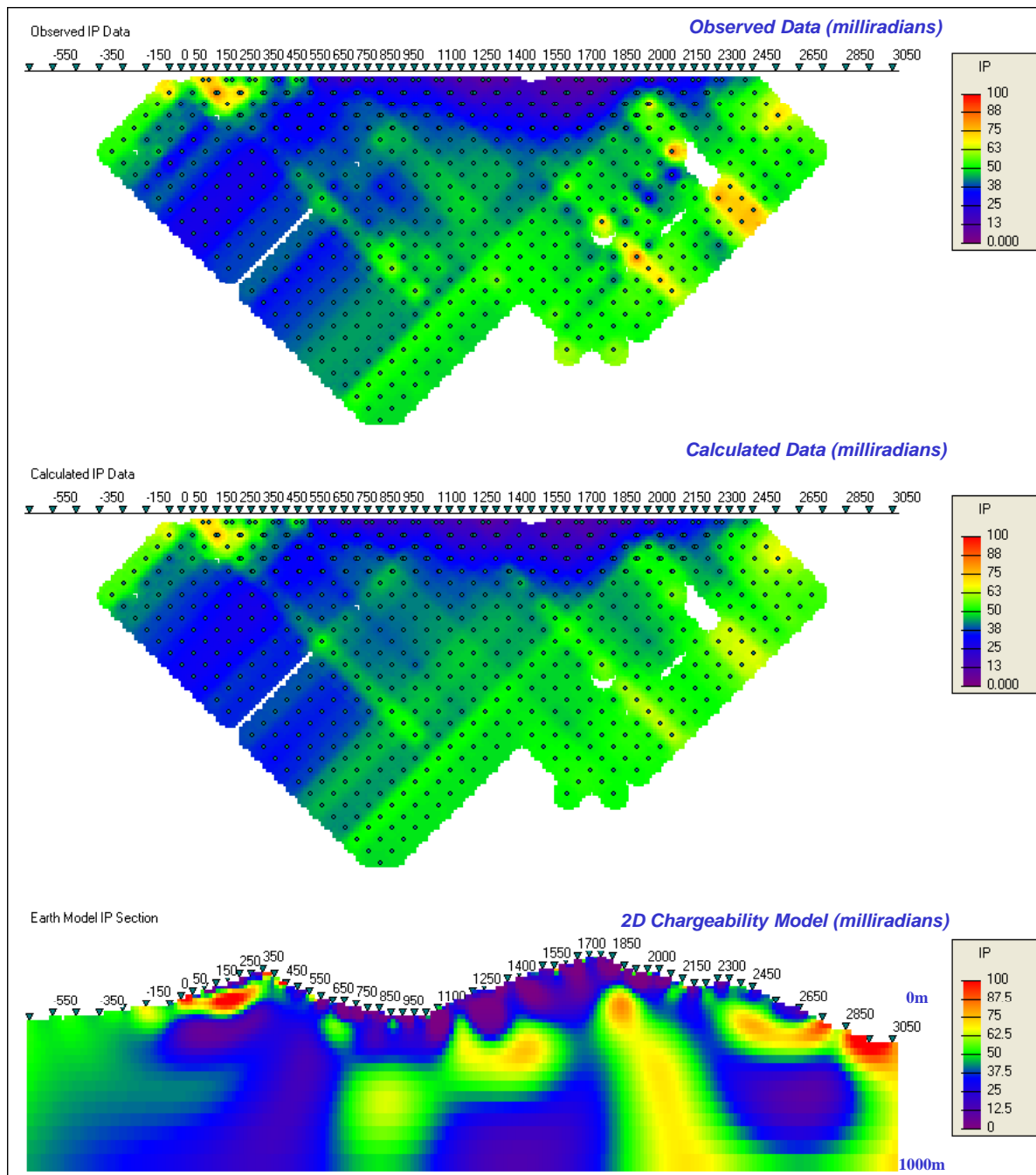
50 iter	data misfit	model norm	multiplier
0	3.99589E+04	0.00000E+00	0.00000E+00
1	3.78912E+04	1.12385E+01	2.35267E+01
47	9.75010E+02	2.39641E+03	4.92492E-01
48	9.75051E+02	2.32357E+03	4.46131E-01
49	9.75323E+02	2.26959E+03	4.63785E-01
50	9.78899E+02	2.21701E+03	4.63786E-01

952 number of data



L600N- UBC 2D IP Chargeability Inversion Results (smIP nullcon)

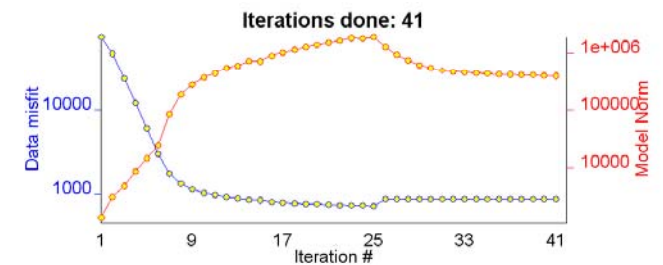
Smooth 2D IP Chargeability Inversion using homogeneous conductivity model



Inversion Parameters

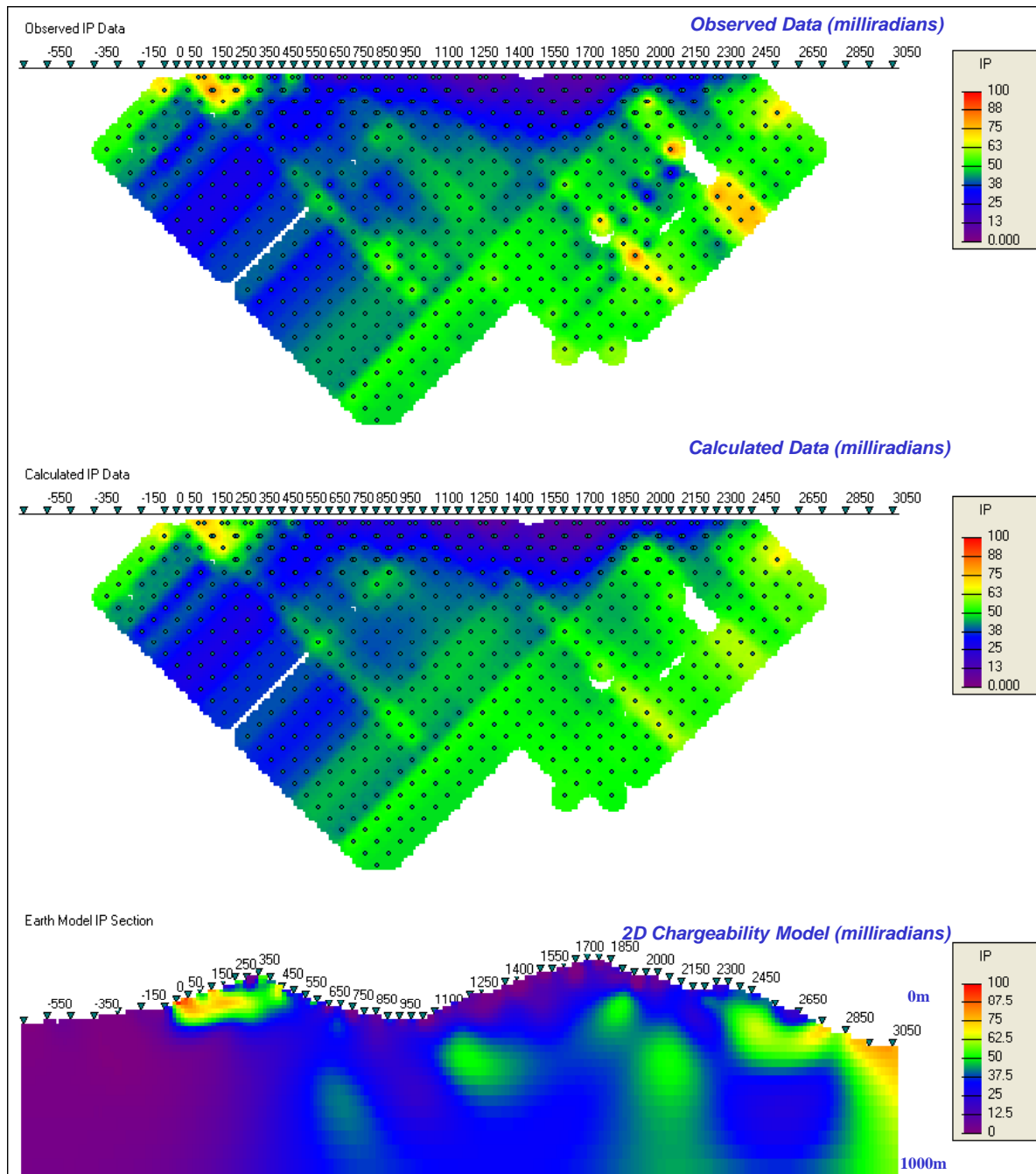
41 iter	data misfit	model norm	multiplier
0	1.35066E+05	0.00000E+00	0.00000E+00
1	7.49707E+04	1.37796E+03	2.45227E+02
2	4.80860E+04	3.10205E+03	2.28801E+01
39	8.67870E+02	4.06603E+05	7.22398E-04
40	8.67879E+02	4.01903E+05	7.07171E-04
41	8.67868E+02	3.97891E+05	7.20319E-04

866 number of data



L600N- UBC 2D IP Chargeability Inversion Results (smIP)

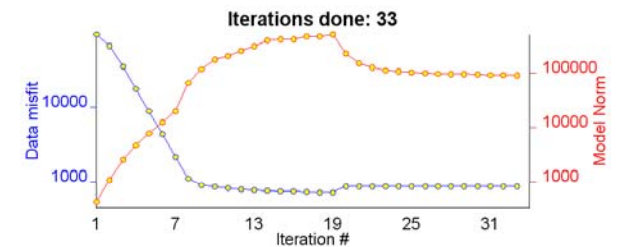
Smooth 2D IP Chargeability Inversion using Titan conductivity model



Inversion Parameters

33 iter	data misfit	model norm	multiplier
0	1.35066E+05	0.00000E+00	0.00000E+00
1	9.17646E+04	4.16869E+02	3.24620E+02
2	6.52212E+04	1.06891E+03	4.07865E+01
31	8.69708E+02	9.39834E+04	2.69366E-03
32	8.69704E+02	9.30405E+04	2.78153E-03
33	8.69704E+02	9.21901E+04	2.68634E-03

866 number of data



L600N- UBC 2D DCIP Inversion Results

